



Transpork

SPECIFICATIONS



AVAILABLE IN:

Drop deck or straight deck models up to 53' Long

Slat Side or Punch Side Construction

53' x 102" x 13'6" TransPork Shown with 6" drop.



Eby's TransPork Series trailers are engineered to ensure the health and safe transport of swine.

Eby offers standard configurations for wean pigs, feeder pigs, market hogs and breeding stock. We also custom build trailers to meet the unique requirements of individual customers. From finding a special component to designing equipment for the way you do business, our sales and engineering staff work with you to achieve your livestock transportation objectives.



The all-aluminum TransPork Series features:

- Slip-Resistant Flooring—Highest button diamond plate flooring. 6061 alloy provides excellent resistance to corrosion wear.
- Bio-Security Features—Extruded aluminum tubular cross-members, Hexagonal extruded aluminum gates, and fully welded floor seams all provide a quicker more thorough wash than traditional construction.
- Strength and Corrosion-Resistance—Eby's legendary construction uses alloys and components that withstand animal usage and road conditions.
- Winter Closure System—Extruded aluminum closure noets are standard on Eby

Impressive Standard Features



Stainless Spring loaded latches



No Step Pull Out Ramp



Closure Track posts – with tapered notching for easier closure installation



Clean internal roof rail—no exposed wiring

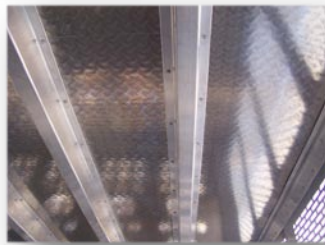


Vented back end with hinged wash out



Hex-Tube Divide Gates

Internal Tubular cross-members



Options:



Fully vented front end with lighted sign



Plastic Closure Plugs



Double Roll Up Doors

Driver Side Escape Door



M.H. Eby, Inc.

Blue Ball, Pennsylvania

West Jefferson, Ohio

Story City, Iowa

Authorized Dealer

www.mheby.com